

FD40

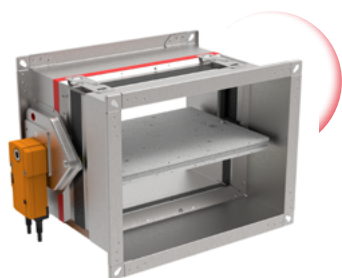
Brandklep, rechthoekig, klepblad 40 mm

CE markering conform EN 15650:2010

Getest conform EN 1366-2

Geclassificeerd conform EN 13501-3

LUKA C/ATC 3



Leverbare typen

FD40

F brandwerend

D klep, vierkant of rechthoekig

40 dikte klepblad 40 mm

- Installatieframe

O geen

MF2 installatieframe 2

- Bediening

Handbediend

R zonder eindschakelaars

RS met eindschakelaars

EMS-S met kleefmagneet

24/48 VDC

(prijzen op aanvraag)

Motorbediend

M24S Belimo 24 V

M230S Belimo 230 V

M24S-ST Belimo 24V

stekkerklaar

EX ATEX geclassificeerde Schischek 230/24V explosie-veilig (prijzen op aanvraag)

- Accessoires

O geen

UG rooksensoren (niet i.c.m. optie R of RS).

Bruto verkoopprijzen in Euro

FD40 O R

H	B																	
	200	250	300	350	400	450	500	550	600	650	700	750	800	850	900	950	1000	1050
200														360	365	371	378	383
250														372	378	384	391	397
300														383	390	397	404	411
350														395	402	410	417	424
400														407	414	422	430	438
450														419	427	436	443	452
500														431	439	448	457	466
550														442	452	461	470	479
600														458	468	477	487	497
650			375	387	398	409	420	432	443	409	419	429	439	470	480	490	500	510
700			383	394	407	419	430	442	453	466	430	440	451	482	492	503	515	525
750					438	450	462	474	487	500	512	472	483	495	506	517	528	539
800					447	459	472	486	498	511	523	537	495	506	518	529	541	552

H	B								
	1100	1150	1200	1250	1300	1350	1400	1450	1500
200	389	394	401	437	443	449	454	460	467
250	403	410	415	452	459	466	471	478	485
300	418	424	431	469	476	482	489	496	502
350	432	439	447	485	491	499	506	513	520
400	446	453	461	500	508	516	524	531	538
450	460	468	477	516	524	532	540	548	557
500	474	483	491	531	540	548	557	566	575
550	489	528	538	547	556	565	575	584	593
600	506	547	556	566	576	585	595	605	615
650	521	561	571	581	591	603	613	623	633
700	566	577	587	598	608	619	629	640	650
750	580	591	603	614	625	636	647	658	669
800	595	606	618	629	642	653	665	676	687

■ = Voorraadartikel

Bruto verkoopprijzen in Euro

FD40 O RS

H	B																	
	200	250	300	350	400	450	500	550	600	650	700	750	800	850	900	950	1000	1050
200														449	454	460	467	472
250														460	467	473	480	486
300														472	479	486	492	500
350														485	491	499	506	513
400														496	503	511	519	527
450														508	516	525	532	541
500														520	528	537	546	555
550														531	540	550	559	568
600														547	557	566	576	586
650			464	476	487	498	509	520	532	498	508	518	528	559	569	579	589	599
700			472	483	496	507	519	531	542	555	519	529	540	571	581	593	634	644
750					527	539	551	564	576	588	601	561	573	584	595	606	647	658
800					536	548	561	574	587	600	613	626	584	595	607	618	661	673

H	B								
	1100	1150	1200	1250	1300	1350	1400	1450	1500
200	478	483	490	526	532	538	544	549	555
250	492	499	505	541	548	555	560	567	574
300	507	513	520	557	565	571	578	585	591
350	520	528	535	573	580	588	595	603	609
400	535	542	550	589	597	604	611	619	627
450	549	557	566	605	613	620	629	637	646
500	564	573	580	620	629	637	646	655	664
550	577	617	626	636	645	654	664	673	682
600	595	636	645	655	665	674	684	694	703
650	609	650	661	671	681	692	702	712	722
700	655	665	676	687	697	708	718	730	740
750	669	681	692	703	714	725	736	747	759
800	684	695	707	718	731	742	754	765	776

Bruto verkoopprijzen in Euro

FD40 O M24S

H	B																	
	200	250	300	350	400	450	500	550	600	650	700	750	800	850	900	950	1000	1050
200														744	750	756	762	767
250														756	762	769	775	781
300														767	774	781	789	795
350														780	786	794	801	809
400														792	799	806	814	822
450														803	812	820	828	836
500														815	824	832	841	850
550														826	836	845	854	863
600														842	852	861	871	881
650			760	771	782	793	804	816	828	793	803	813	824	854	864	874	884	894
700			767	779	791	803	814	826	838	850	814	824	835	867	877	888	929	1.039
750					822	834	847	859	871	884	897	857	868	879	989	1.000	1.043	1.054
800					831	843	857	870	882	896	908	921	979	990	1.002	1.014	1.056	1.067

H	B								
	1100	1150	1200	1250	1300	1350	1400	1450	1500
200	773	780	785	821	828	833	839	844	851
250	787	794	800	838	843	850	857	862	869
300	802	809	815	853	860	867	873	880	887
350	816	823	831	869	875	883	890	898	904
400	830	838	845	884	892	900	908	916	923
450	844	853	861	900	908	917	924	932	941
500	859	868	877	916	924	933	941	950	959
550	873	912	922	931	940	949	959	968	977
600	891	931	940	950	960	1.069	1.079	1.089	1.098
650	906	946	1.056	1.066	1.076	1.086	1.097	1.107	1.117
700	1.050	1.060	1.072	1.082	1.093	1.104	1.114	1.125	1.135
750	1.065	1.076	1.087	1.098	1.109	1.121	1.132	1.143	1.154
800	1.079	1.090	1.103	1.114	1.126	1.137	1.148	1.161	1.172

Bruto verkoopprijzen in Euro

FD40 O M230S

H	B																	
	200	250	300	350	400	450	500	550	600	650	700	750	800	850	900	950	1000	1050
200														786	792	799	804	810
250														799	804	811	818	823
300														810	816	824	831	838
350														822	830	836	844	851
400														834	842	850	857	864
450														845	854	862	870	879
500														858	867	874	883	892
550														869	879	888	897	906
600														884	894	904	913	923
650			802	813	824	835	848	859	870	835	845	855	867	897	907	917	927	938
700			810	821	833	845	857	869	881	892	857	867	878	909	919	930	971	1.126
750					864	877	889	901	914	927	939	899	910	921	1.076	1.087	1.128	1.139
800					873	886	899	912	924	938	950	963	1.065	1.077	1.088	1.100	1.142	1.154

H	B								
	1100	1150	1200	1250	1300	1350	1400	1450	1500
200	815	822	828	864	870	875	881	887	893
250	830	836	842	880	886	892	899	904	911
300	844	851	858	896	902	909	916	922	929
350	859	865	873	911	918	926	932	940	947
400	872	880	888	927	935	942	950	958	966
450	887	896	903	942	950	959	967	975	984
500	901	910	919	958	967	976	984	992	1.001
550	916	955	965	973	982	992	1.001	1.010	1.019
600	933	973	982	992	1.002	1.156	1.165	1.175	1.185
650	948	988	1.142	1.153	1.163	1.173	1.183	1.193	1.203
700	1.136	1.147	1.157	1.168	1.178	1.190	1.201	1.211	1.222
750	1.151	1.162	1.173	1.184	1.195	1.206	1.217	1.229	1.240
800	1.165	1.177	1.188	1.201	1.212	1.223	1.235	1.246	1.259

Bruto verkoopprijzen in Euro

FD40 O M24S-ST

H	B																	
	200	250	300	350	400	450	500	550	600	650	700	750	800	850	900	950	1000	1050
200														793	800	806	812	817
250														806	812	819	825	831
300														817	824	831	838	845
350														830	836	844	851	858
400														842	849	856	865	872
450														853	861	870	877	887
500														866	874	882	891	900
550														876	887	895	904	913
600														892	902	911	921	931
650			809	821	832	843	854	867	877	843	853	863	874	904	914	924	935	944
700			817	828	841	853	865	876	888	900	865	874	886	917	926	938	979	1.111
750					872	884	896	909	921	935	946	906	918	928	1.060	1.071	1.114	1.124
800					880	893	906	920	932	945	958	971	1.050	1.061	1.074	1.085	1.127	1.138

H	B								
	1100	1150	1200	1250	1300	1350	1400	1450	1500
200	823	830	835	871	877	883	889	894	901
250	837	844	850	888	893	900	906	912	919
300	852	858	866	903	910	917	923	930	937
350	867	873	880	919	925	934	940	947	955
400	879	888	895	935	942	949	958	965	973
450	894	903	911	949	958	966	975	982	991
500	909	918	926	965	975	983	991	1.000	1.009
550	923	962	972	981	990	999	1.009	1.017	1.027
600	941	981	990	1.000	1.010	1.140	1.150	1.161	1.169
650	956	995	1.127	1.137	1.147	1.157	1.168	1.179	1.188
700	1.121	1.132	1.142	1.153	1.164	1.175	1.185	1.197	1.206
750	1.136	1.147	1.158	1.169	1.181	1.191	1.203	1.214	1.225
800	1.150	1.162	1.174	1.185	1.198	1.208	1.220	1.232	1.243

Bruto verkoopprijzen in Euro

FD40 O M24S UG

H	B																	
	200	250	300	350	400	450	500	550	600	650	700	750	800	850	900	950	1000	1050
200														2.005	2.016	2.027	2.039	2.049
250														2.018	2.029	2.041	2.053	2.065
300														2.031	2.043	2.056	2.067	2.080
350														2.044	2.057	2.034	2.046	2.059
400														2.058	2.071	2.084	2.097	2.111
450														2.071	2.084	2.098	2.112	2.126
500														2.084	2.098	2.113	2.127	2.141
550														2.097	2.112	2.127	2.142	2.157
600														2.114	2.129	2.145	2.160	2.175
650			1.879	1.894	1.909	1.924	1.940	1.955	1.999	2.038	2.054	2.069	2.084	2.128	2.144	2.159	2.175	2.191
700			1.887	1.902	1.918	1.934	1.950	1.966	2.010	2.026	2.065	2.081	2.097	2.142	2.158	2.174	2.232	2.349
750					1.954	1.971	1.987	2.004	2.048	2.064	2.080	2.122	2.139	2.156	2.272	2.289	2.348	2.363
800					1.964	1.981	1.997	2.013	2.059	2.076	2.092	2.109	2.252	2.269	2.286	2.303	2.362	2.379

H	B								
	1100	1150	1200	1250	1300	1350	1400	1450	1500
200	2.061	2.072	2.083	2.136	2.148	2.159	2.170	2.182	2.193
250	2.077	2.089	2.100	2.153	2.165	2.177	2.188	2.201	2.213
300	2.092	2.105	2.117	2.170	2.183	2.195	2.208	2.220	2.232
350	2.108	2.121	2.133	2.188	2.201	2.214	2.227	2.239	2.252
400	2.124	2.138	2.150	2.205	2.218	2.232	2.245	2.258	2.271
450	2.140	2.153	2.167	2.222	2.236	2.250	2.264	2.278	2.291
500	2.156	2.169	2.183	2.239	2.253	2.268	2.282	2.297	2.310
550	2.170	2.228	2.241	2.256	2.271	2.286	2.301	2.316	2.330
600	2.191	2.247	2.262	2.278	2.292	2.408	2.423	2.439	2.454
650	2.206	2.264	2.379	2.395	2.411	2.426	2.442	2.458	2.474
700	2.365	2.380	2.396	2.412	2.429	2.445	2.461	2.477	2.493
750	2.380	2.397	2.413	2.430	2.447	2.463	2.480	2.496	2.513
800	2.396	2.413	2.430	2.447	2.464	2.482	2.499	2.516	2.533

Bruto verkoopprijzen in Euro

FD40 O M230S UG

H	B																	
	200	250	300	350	400	450	500	550	600	650	700	750	800	850	900	950	1000	1050
200														2.104	2.114	2.126	2.138	2.148
250														2.116	2.128	2.140	2.152	2.164
300														2.130	2.142	2.154	2.166	2.179
350														2.143	2.156	2.168	2.181	2.194
400														2.157	2.169	2.183	2.196	2.210
450														2.169	2.183	2.197	2.211	2.224
500														2.183	2.197	2.212	2.226	2.239
550														2.196	2.211	2.226	2.240	2.255
600														2.213	2.228	2.244	2.258	2.273
650			1.976	1.991	2.007	2.022	2.038	2.053	2.096	2.136	2.152	2.167	2.183	2.227	2.243	2.257	2.273	2.289
700			1.984	2.000	2.016	2.031	2.047	2.063	2.108	2.123	2.164	2.180	2.196	2.240	2.256	2.272	2.331	2.491
750					2.052	2.069	2.084	2.100	2.145	2.162	2.178	2.220	2.237	2.254	2.415	2.431	2.490	2.507
800					2.061	2.078	2.094	2.111	2.157	2.173	2.189	2.206	2.395	2.412	2.429	2.446	2.505	2.522

H	B								
	1100	1150	1200	1250	1300	1350	1400	1450	1500
200	2.160	2.171	2.182	2.235	2.247	2.257	2.269	2.281	2.291
250	2.176	2.187	2.199	2.252	2.264	2.275	2.288	2.300	2.311
300	2.192	2.203	2.216	2.269	2.282	2.295	2.306	2.319	2.331
350	2.206	2.219	2.232	2.287	2.300	2.313	2.325	2.338	2.351
400	2.222	2.236	2.249	2.304	2.317	2.331	2.343	2.357	2.370
450	2.238	2.252	2.266	2.321	2.335	2.349	2.362	2.376	2.390
500	2.254	2.268	2.282	2.338	2.352	2.367	2.380	2.395	2.409
550	2.270	2.326	2.340	2.355	2.370	2.385	2.400	2.414	2.428
600	2.289	2.345	2.360	2.376	2.391	2.551	2.566	2.581	2.597
650	2.305	2.362	2.523	2.538	2.553	2.569	2.585	2.601	2.616
700	2.507	2.524	2.540	2.555	2.571	2.587	2.604	2.620	2.636
750	2.523	2.540	2.557	2.572	2.589	2.606	2.622	2.639	2.656
800	2.540	2.557	2.574	2.590	2.607	2.624	2.641	2.658	2.675

Bruto verkoopprijzen in Euro

FD40 MF2 R

H	B																	
	200	250	300	350	400	450	500	550	600	650	700	750	800	850	900	950	1000	1050
200														695	711	727	743	758
250														716	732	749	766	782
300														737	754	771	788	805
350														758	777	793	812	828
400														780	798	816	834	852
450														801	820	838	857	875
500														822	841	860	879	898
550														844	863	883	903	922
600														869	889	909	929	949
650			644	664	685	705	726	747	767	787	808	828	849	891	911	931	953	973
700			660	681	702	723	745	765	786	807	828	850	870	912	934	955	1.007	1.028
750					740	762	783	805	826	848	870	891	912	934	956	977	1.030	1.051
800					757	780	802	823	845	868	890	911	934	956	978	999	1.053	1.075

H	B								
	1100	1150	1200	1250	1300	1350	1400	1450	1500
200	774	791	807	855	871	887	903	919	935
250	799	816	832	879	896	913	929	946	963
300	822	840	857	905	922	939	957	974	991
350	847	863	882	930	948	965	983	1.000	1.018
400	870	888	906	956	974	992	1.010	1.028	1.046
450	894	912	931	981	999	1.018	1.036	1.055	1.074
500	918	937	956	1.007	1.026	1.045	1.064	1.083	1.102
550	942	963	1.012	1.032	1.051	1.070	1.091	1.110	1.130
600	970	1.020	1.041	1.061	1.081	1.101	1.120	1.140	1.161
650	993	1.045	1.066	1.086	1.106	1.128	1.148	1.168	1.189
700	1.049	1.069	1.091	1.112	1.133	1.154	1.175	1.196	1.217
750	1.072	1.095	1.116	1.137	1.159	1.181	1.202	1.223	1.245
800	1.097	1.119	1.141	1.163	1.185	1.207	1.229	1.251	1.273

Bruto verkoopprijzen in Euro

FD40 MF2 RS

H	B																	
	200	250	300	350	400	450	500	550	600	650	700	750	800	850	900	950	1000	1050
200														736	752	769	785	801
250														757	774	791	807	824
300														779	797	814	831	848
350														801	818	836	853	871
400														822	840	858	876	894
450														843	861	880	898	918
500														865	884	903	922	941
550														886	906	925	944	964
600														911	931	950	971	991
650			668	688	709	730	750	771	791	830	850	871	891	932	953	974	994	1.015
700			684	705	727	748	768	789	810	832	870	891	912	955	975	996	1.049	1.069
750					765	786	807	830	851	872	893	932	955	976	997	1.019	1.071	1.094
800					782	804	825	848	870	892	913	936	976	997	1.019	1.042	1.095	1.117

H	B								
	1100	1150	1200	1250	1300	1350	1400	1450	1500
200	817	833	849	896	912	928	945	961	977
250	841	857	874	922	939	955	972	989	1.005
300	865	882	898	947	964	981	998	1.015	1.032
350	888	906	924	973	990	1.008	1.025	1.043	1.061
400	912	930	948	998	1.016	1.034	1.052	1.070	1.088
450	936	955	973	1.023	1.042	1.060	1.079	1.097	1.116
500	960	979	998	1.048	1.067	1.086	1.105	1.124	1.144
550	983	1.034	1.054	1.074	1.094	1.113	1.132	1.152	1.171
600	1.011	1.063	1.083	1.102	1.122	1.142	1.163	1.183	1.203
650	1.035	1.087	1.107	1.129	1.149	1.169	1.190	1.210	1.231
700	1.091	1.112	1.133	1.154	1.174	1.196	1.217	1.238	1.259
750	1.115	1.136	1.158	1.180	1.201	1.222	1.244	1.266	1.287
800	1.139	1.161	1.183	1.205	1.227	1.249	1.271	1.293	1.315

Bruto verkoopprijzen in Euro

FD40 MF2 M24S

H	B																	
	200	250	300	350	400	450	500	550	600	650	700	750	800	850	900	950	1000	1050
200														1.068	1.084	1.099	1.115	1.131
250														1.088	1.105	1.121	1.137	1.154
300														1.110	1.127	1.144	1.161	1.176
350														1.131	1.148	1.165	1.183	1.200
400														1.152	1.169	1.187	1.205	1.223
450														1.172	1.191	1.209	1.227	1.245
500														1.193	1.212	1.231	1.250	1.269
550														1.215	1.234	1.253	1.272	1.291
600														1.239	1.259	1.278	1.298	1.318
650			1.018	1.039	1.059	1.079	1.099	1.119	1.139	1.159	1.180	1.200	1.220	1.260	1.280	1.301	1.321	1.341
700			1.034	1.054	1.076	1.096	1.117	1.137	1.158	1.179	1.199	1.220	1.240	1.281	1.303	1.323	1.374	1.496
750					1.113	1.134	1.155	1.176	1.198	1.219	1.239	1.260	1.281	1.303	1.425	1.446	1.498	1.519
800					1.130	1.151	1.173	1.194	1.216	1.238	1.259	1.280	1.403	1.425	1.446	1.468	1.520	1.541

H	B								
	1100	1150	1200	1250	1300	1350	1400	1450	1500
200	1.147	1.163	1.179	1.225	1.241	1.257	1.272	1.288	1.304
250	1.170	1.186	1.203	1.250	1.267	1.283	1.298	1.315	1.331
300	1.193	1.210	1.227	1.275	1.291	1.308	1.325	1.342	1.359
350	1.217	1.234	1.252	1.299	1.316	1.333	1.351	1.368	1.385
400	1.240	1.258	1.276	1.324	1.342	1.360	1.378	1.395	1.413
450	1.263	1.281	1.301	1.349	1.367	1.385	1.403	1.421	1.441
500	1.287	1.306	1.325	1.374	1.393	1.411	1.430	1.449	1.467
550	1.310	1.360	1.380	1.399	1.418	1.437	1.456	1.476	1.495
600	1.338	1.388	1.408	1.427	1.447	1.567	1.587	1.606	1.626
650	1.361	1.412	1.533	1.553	1.573	1.593	1.613	1.634	1.654
700	1.516	1.537	1.557	1.577	1.599	1.619	1.640	1.660	1.681
750	1.539	1.560	1.582	1.603	1.624	1.645	1.667	1.688	1.709
800	1.564	1.585	1.606	1.628	1.650	1.672	1.693	1.714	1.737

Bruto verkoopprijzen in Euro

FD40 MF2 M230S

H	B																	
	200	250	300	350	400	450	500	550	600	650	700	750	800	850	900	950	1000	1050
200														1.111	1.127	1.142	1.158	1.173
250														1.132	1.148	1.164	1.181	1.197
300														1.152	1.169	1.186	1.203	1.220
350														1.173	1.190	1.208	1.225	1.242
400														1.194	1.212	1.229	1.248	1.266
450														1.216	1.234	1.252	1.270	1.288
500														1.236	1.255	1.274	1.292	1.311
550														1.257	1.276	1.295	1.314	1.334
600														1.281	1.302	1.321	1.341	1.360
650			1.061	1.081	1.101	1.121	1.141	1.162	1.182	1.202	1.222	1.242	1.262	1.303	1.323	1.343	1.363	1.383
700			1.077	1.098	1.118	1.138	1.159	1.180	1.201	1.221	1.242	1.262	1.284	1.324	1.345	1.365	1.417	1.582
750					1.155	1.176	1.198	1.219	1.240	1.261	1.283	1.304	1.324	1.345	1.512	1.533	1.584	1.605
800					1.172	1.194	1.216	1.237	1.259	1.280	1.302	1.324	1.489	1.512	1.533	1.554	1.607	1.628

H	B								
	1100	1150	1200	1250	1300	1350	1400	1450	1500
200	1.189	1.205	1.221	1.268	1.284	1.299	1.315	1.331	1.346
250	1.212	1.229	1.245	1.292	1.309	1.325	1.341	1.358	1.374
300	1.236	1.253	1.270	1.318	1.334	1.350	1.367	1.384	1.401
350	1.259	1.277	1.294	1.342	1.359	1.377	1.394	1.411	1.428
400	1.283	1.301	1.319	1.367	1.384	1.402	1.420	1.437	1.455
450	1.307	1.325	1.343	1.392	1.410	1.428	1.447	1.465	1.483
500	1.330	1.348	1.367	1.416	1.435	1.454	1.472	1.491	1.511
550	1.354	1.403	1.423	1.442	1.461	1.480	1.499	1.518	1.537
600	1.380	1.430	1.450	1.470	1.489	1.654	1.673	1.693	1.713
650	1.403	1.454	1.620	1.640	1.660	1.680	1.699	1.720	1.740
700	1.603	1.623	1.644	1.664	1.686	1.706	1.727	1.747	1.767
750	1.626	1.647	1.669	1.690	1.711	1.732	1.754	1.774	1.795
800	1.651	1.672	1.693	1.715	1.737	1.758	1.780	1.801	1.822

Bruto verkoopprijzen in Euro

FD40 MF2 M24S-ST

H	B																	
	200	250	300	350	400	450	500	550	600	650	700	750	800	850	900	950	1000	1050
200														1.118	1.134	1.149	1.165	1.181
250														1.138	1.155	1.171	1.187	1.204
300														1.159	1.176	1.193	1.210	1.226
350														1.181	1.198	1.215	1.233	1.250
400														1.202	1.219	1.237	1.255	1.273
450														1.222	1.241	1.259	1.277	1.295
500														1.243	1.262	1.280	1.299	1.319
550														1.264	1.284	1.303	1.322	1.341
600														1.289	1.309	1.328	1.348	1.367
650			1.068	1.088	1.109	1.129	1.149	1.169	1.189	1.209	1.229	1.250	1.270	1.310	1.330	1.350	1.371	1.391
700			1.084	1.104	1.126	1.146	1.167	1.187	1.208	1.228	1.249	1.270	1.290	1.331	1.353	1.373	1.424	1.567
750					1.163	1.184	1.205	1.226	1.248	1.269	1.289	1.310	1.331	1.353	1.496	1.517	1.569	1.590
800					1.180	1.201	1.223	1.244	1.266	1.288	1.309	1.330	1.475	1.496	1.517	1.539	1.591	1.612

H	B								
	1100	1150	1200	1250	1300	1350	1400	1450	1500
200	1.197	1.212	1.228	1.275	1.291	1.307	1.322	1.338	1.354
250	1.220	1.236	1.253	1.299	1.316	1.332	1.348	1.365	1.381
300	1.243	1.260	1.277	1.325	1.341	1.358	1.375	1.392	1.409
350	1.267	1.284	1.302	1.349	1.366	1.383	1.401	1.418	1.435
400	1.290	1.308	1.326	1.374	1.392	1.410	1.428	1.445	1.463
450	1.313	1.331	1.350	1.399	1.417	1.435	1.453	1.471	1.490
500	1.337	1.356	1.375	1.424	1.443	1.461	1.480	1.499	1.517
550	1.360	1.410	1.430	1.449	1.468	1.487	1.506	1.525	1.545
600	1.388	1.437	1.458	1.477	1.497	1.638	1.658	1.677	1.697
650	1.411	1.462	1.604	1.624	1.644	1.664	1.685	1.705	1.725
700	1.587	1.608	1.628	1.648	1.670	1.690	1.711	1.731	1.752
750	1.610	1.632	1.653	1.674	1.695	1.716	1.738	1.759	1.780
800	1.635	1.656	1.677	1.699	1.721	1.743	1.764	1.785	1.808

Bruto verkoopprijzen in Euro

FD40 MF2 M24S UG

H	B																	
	200	250	300	350	400	450	500	550	600	650	700	750	800	850	900	950	1000	1050
200														2.330	2.350	2.370	2.392	2.413
250														2.350	2.373	2.393	2.414	2.439
300														2.374	2.395	2.419	2.440	2.461
350														2.395	2.419	2.404	2.428	2.450
400														2.418	2.441	2.465	2.488	2.512
450														2.440	2.464	2.488	2.512	2.534
500														2.462	2.487	2.512	2.535	2.560
550														2.485	2.509	2.534	2.560	2.584
600														2.511	2.536	2.562	2.587	2.611
650			2.138	2.161	2.186	2.210	2.235	2.257	2.310	2.404	2.430	2.455	2.480	2.534	2.560	2.585	2.611	2.637
700			2.154	2.178	2.202	2.227	2.252	2.276	2.331	2.355	2.449	2.477	2.501	2.557	2.584	2.609	2.676	2.805
750					2.245	2.271	2.296	2.321	2.375	2.398	2.423	2.526	2.552	2.580	2.708	2.735	2.803	2.829
800					2.263	2.288	2.315	2.338	2.392	2.419	2.443	2.468	2.676	2.704	2.729	2.757	2.827	2.854

H	B								
	1100	1150	1200	1250	1300	1350	1400	1450	1500
200	2.435	2.455	2.477	2.541	2.562	2.583	2.603	2.625	2.646
250	2.460	2.480	2.503	2.565	2.588	2.610	2.631	2.654	2.675
300	2.483	2.507	2.529	2.593	2.614	2.636	2.659	2.682	2.704
350	2.508	2.531	2.554	2.619	2.642	2.664	2.688	2.710	2.733
400	2.534	2.558	2.581	2.645	2.668	2.692	2.715	2.738	2.761
450	2.559	2.582	2.606	2.672	2.695	2.719	2.742	2.767	2.791
500	2.583	2.607	2.632	2.698	2.721	2.745	2.771	2.795	2.819
550	2.607	2.675	2.700	2.724	2.750	2.774	2.798	2.824	2.847
600	2.637	2.703	2.729	2.754	2.779	2.906	2.931	2.955	2.982
650	2.662	2.730	2.857	2.882	2.909	2.933	2.959	2.984	3.011
700	2.830	2.857	2.882	2.908	2.935	2.960	2.987	3.012	3.039
750	2.855	2.882	2.908	2.935	2.962	2.988	3.015	3.041	3.068
800	2.881	2.908	2.933	2.962	2.987	3.017	3.043	3.070	3.098

Bruto verkoopprijzen in Euro

FD40 MF2 M230S UG

H	B																	
	200	250	300	350	400	450	500	550	600	650	700	750	800	850	900	950	1000	1050
200														2.428	2.448	2.470	2.492	2.512
250														2.449	2.472	2.493	2.515	2.537
300														2.473	2.494	2.516	2.538	2.561
350														2.494	2.516	2.540	2.562	2.585
400														2.517	2.540	2.563	2.587	2.611
450														2.540	2.563	2.586	2.611	2.634
500														2.561	2.585	2.612	2.634	2.658
550														2.584	2.609	2.633	2.658	2.684
600														2.610	2.635	2.659	2.686	2.710
650			2.235	2.258	2.284	2.308	2.332	2.355	2.408	2.502	2.529	2.554	2.579	2.633	2.658	2.684	2.709	2.735
700			2.251	2.276	2.301	2.324	2.351	2.374	2.427	2.452	2.550	2.576	2.602	2.655	2.683	2.707	2.776	2.946
750					2.342	2.369	2.393	2.419	2.471	2.496	2.522	2.625	2.651	2.679	2.851	2.877	2.945	2.972
800					2.360	2.387	2.411	2.436	2.491	2.515	2.541	2.567	2.820	2.847	2.874	2.900	2.970	2.996

H	B									
	1100	1150	1200	1250	1300	1350	1400	1450	1500	
200	2.533	2.554	2.576	2.638	2.660	2.682	2.703	2.725	2.744	
250	2.559	2.580	2.602	2.664	2.687	2.708	2.730	2.753	2.774	
300	2.583	2.605	2.628	2.691	2.714	2.736	2.758	2.781	2.803	
350	2.606	2.631	2.653	2.718	2.741	2.763	2.787	2.809	2.831	
400	2.633	2.656	2.680	2.744	2.767	2.791	2.813	2.837	2.860	
450	2.658	2.682	2.705	2.771	2.794	2.817	2.843	2.866	2.890	
500	2.684	2.706	2.730	2.796	2.821	2.845	2.869	2.894	2.918	
550	2.708	2.775	2.798	2.823	2.848	2.872	2.897	2.923	2.946	
600	2.736	2.802	2.828	2.854	2.878	3.049	3.074	3.099	3.125	
650	2.760	2.829	3.001	3.025	3.051	3.076	3.102	3.127	3.153	
700	2.973	2.999	3.026	3.052	3.078	3.104	3.130	3.157	3.181	
750	2.998	3.025	3.052	3.078	3.105	3.133	3.158	3.185	3.211	
800	3.025	3.051	3.078	3.105	3.133	3.159	3.187	3.213	3.239	

Meerprijzen

Voor inwendige en uitwendige afwerking van de stalen brandklep mantel met epoxy poedercoating (RAL 9005), geldt een meerprijs van 70 % ten opzichte van de FD(25/40)OR prijs.

Andere RAL kleuren op aanvraag.

Belimo accessoire

Belimo voedings en communicatiemodule:

BKN-230-24 MOD	413
-----------------------	-----